

**STANDARD ARRIVAL
CHART -
INSTRUMENT
(STAR)**

TRANSITION ALTITUDE
8000'
TRANSITION LEVEL
ATC

RADAR APP S 124.50 TWR E 118.60
E 124.50 W 118.10
W 123.70 ATIS 126.20
DIR 121.40 115.20
ACC N 126.70 SMC 121.90

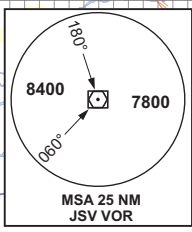
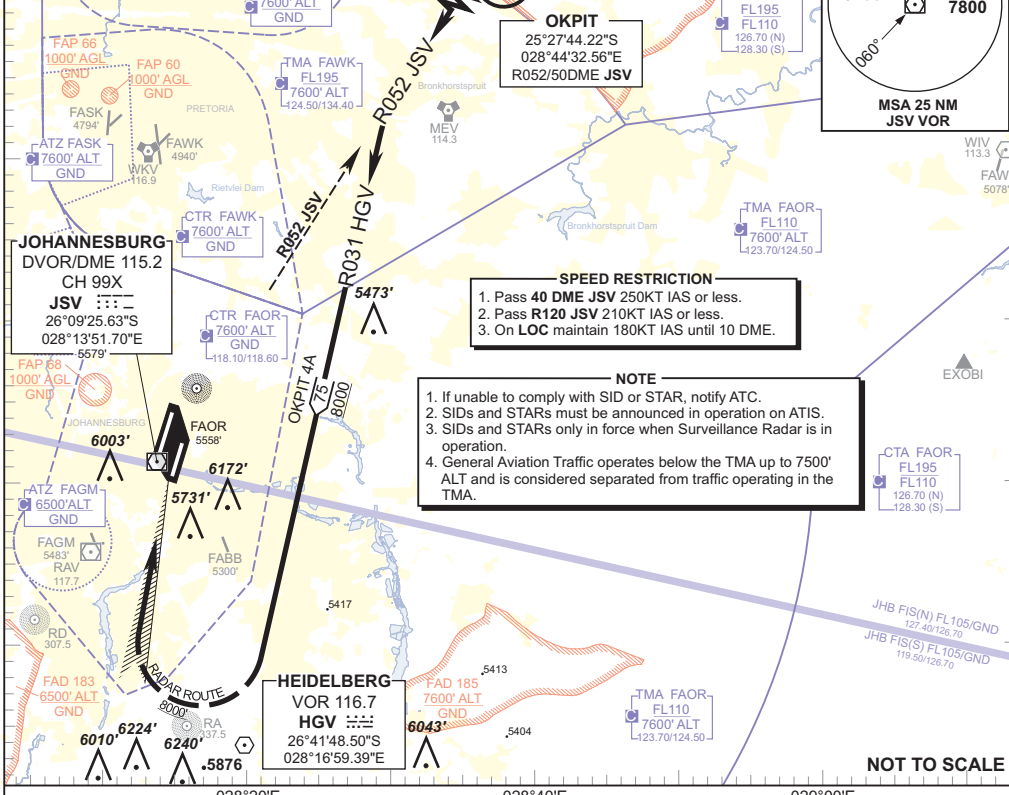
JOHANNESBURG
(O.R. TAMBO INTERNATIONAL)
RWY 03R
OKPIT 4A

25°
40'S

26°
00'S

26°
20'S

**ELEV, ALT & HGT IN FEET
DIST IN NM
BRG ARE MAG
VAR 18°W (2010)**



OKPIT
25°27'44.22\"S
028°44'32.56\"E
R052/50DME JSV

SPEED RESTRICTION

1. Pass 40 DME JSV 250KT IAS or less.
2. Pass R120 JSV 210KT IAS or less.
3. On LOC until 10 DME.

NOTE

1. If unable to comply with SID or STAR, notify ATC.
2. SIDs and STARs must be announced in operation on ATIS.
3. SIDs and STARs only in force when Surveillance Radar is in operation.
4. General Aviation Traffic operates below the TMA up to 7500' ALT and is considered separated from traffic operating in the TMA.

HEIDELBERG
VOR 116.7
HGV
26°41'48.50\"S
028°16'59.39\"E

NOT TO SCALE

OKPIT 4A RWY 03R : Leave OKPIT on R052 JSV (INBD) to intercept R031 HGV (INBD) for radar vectoring onto the ILS RWY 03R.

COMMUNICATION FAILURE PROCEDURE (Squawk 7600)

Before OKPIT: Proceed to OKPIT and enter the OKPIT hold. Hold at last assigned level for minimum 5 minutes, then descend to FL130 in the hold, or maintain last assigned level if below FL130. Leave OKPIT on the "After OKPIT" Communication Failure Procedure.

After OKPIT: Continue on the routing for the OKPIT 4A STAR. Crossing R086 JSV, while established on R031 HGV, descend to FL100. Passing 15 DME JSV on R031 HGV turn right onto track 301° and descend to 8300' ALT. Crossing R206 JSV turn right onto track 001° to intercept the LOC RWY 03R. Complete a straight-in ILS APCH and land RWY 03R.

Note: Aircraft entering the TMA at FL110 and below are to enter the OKPIT hold at last assigned level, and continue on the routing for the OKPIT 4A STAR.

Caution: Holding patterns below FL 110 will be conducted outside of controlled airspace. Pilots to take note of the appropriate FADS.

In the event of a missed approach with the intention of diverting to an alternate aerodrome, proceed as follows:

- To the North and North-West: Follow the routing for the VASUR 3A SID.
- To the East and North-East: Follow the routing for the EGMEN 2A SID (Jet ACFT) or EXOBI 1A SID (Turboprop ACFT).
- To the South-East: Follow the routing for the APDAK 3A SID.
- To the West and South-West: Follow the routing for the RAGUL 3A SID.

CHANGE: SPEED RESTRICTION BLOCK